



Rother District Crime & ASB Overview Time Period: 2020

Requested by	Insp Chris Varrall
Author(s)	Keri Summers Neighbourhood Intelligence Analyst
Department	East Sussex Neighbourhood Support Team
Reference	47N-2021-000464
Date	2 nd March 2021
Version	1.0

Scope Note

Basic overview of crime and ASB levels in Rother district for 2020.

Analysis

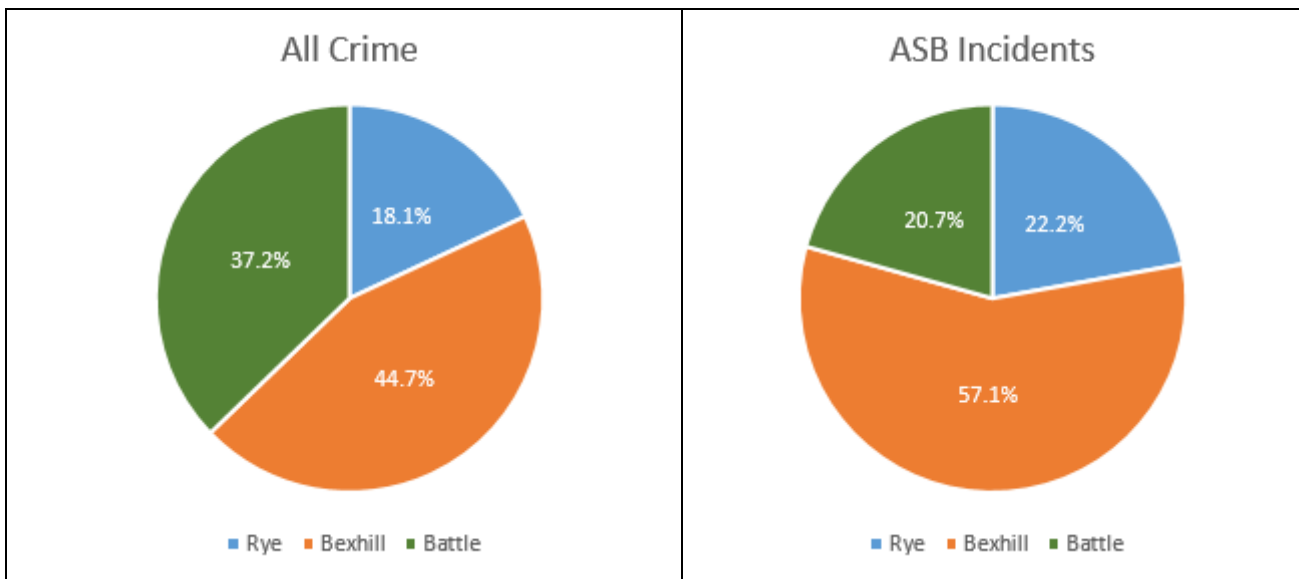
The table below shows that overall crime has reduced by approximately 10% across the district when compared with 2019, however anti-social behaviour incidents have increased significantly just under a 50% increase.

Crime Type	Rolling Year to 31/12/20	Previous Rolling Year	% Change
Burglary	422	459	-8.10%
Arson/Criminal Damage	708	751	-5.70%
Drug Offences	161	137	17.50%
Possession of Weapon	66	70	-5.70%
Public Order	541	515	5.00%
Robbery	18	35	-48.60%
Sexual Offences	228	233	-2.10%
Theft	774	1083	-28.50%
Vehicle Offences	307	438	-29.90%
Violence against the Person	2012	2194	-8.30%
Miscellaneous crimes against society	140	119	17.60%
All Crime	5377	6037	-10.90%
Anti-Social Behaviour Incidents	2329	1580	47.40%

Crimes that have increased were drug offences, public order (includes Sections 1 to 5 riots, violent disorder, affray and causing harassment and miscellaneous crimes against society. Crimes that fall into that category miscellaneous crimes against society. Drug offences increased by 17.5% with 61% (100) recorded as possession of cannabis and 23.8% (39) recorded as trafficking in controlled drugs. The hotspot locations were Sidley (22), Central (20), Sackville (15) and Battle (11).

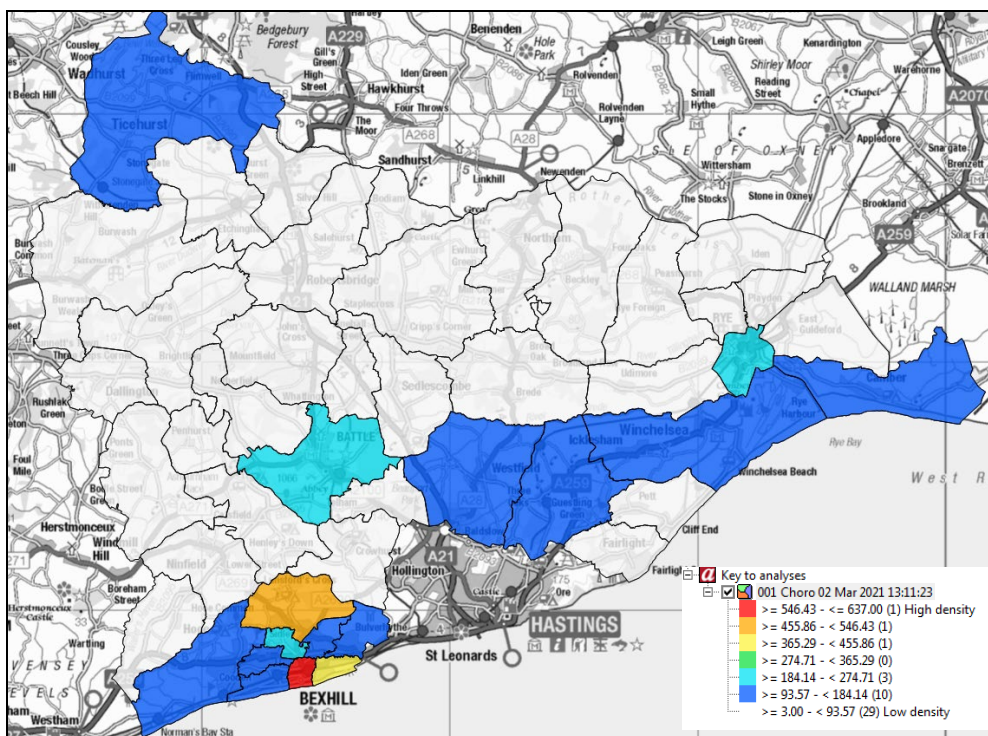
Anti-social behaviour incidents have increased significantly and it is likely that the pandemic has had an impact on these figures.

Overall Bexhill recorded the most offences. The pie charts below indicates the proportion of offences and incidents for each NPT area in Rother district.

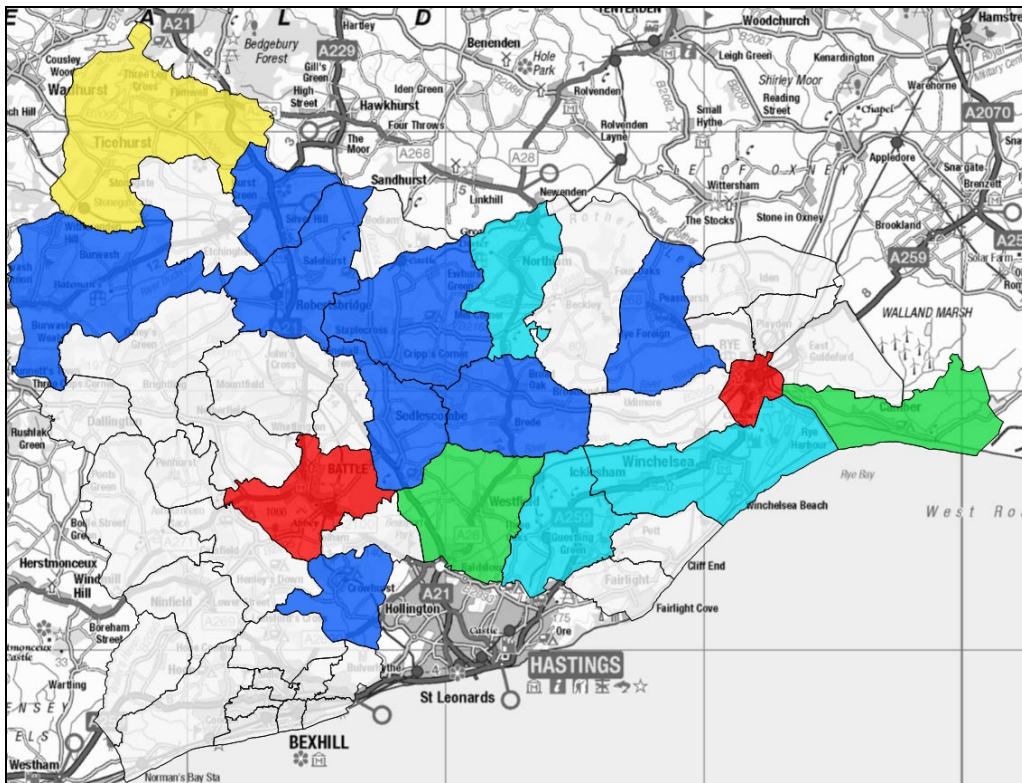


All mapping below of crime and anti-social behaviour incidents have been analysed using choropleth mapping which uses differences in shading within the predefined beat areas to indicate the average values of a particular quantity in those areas

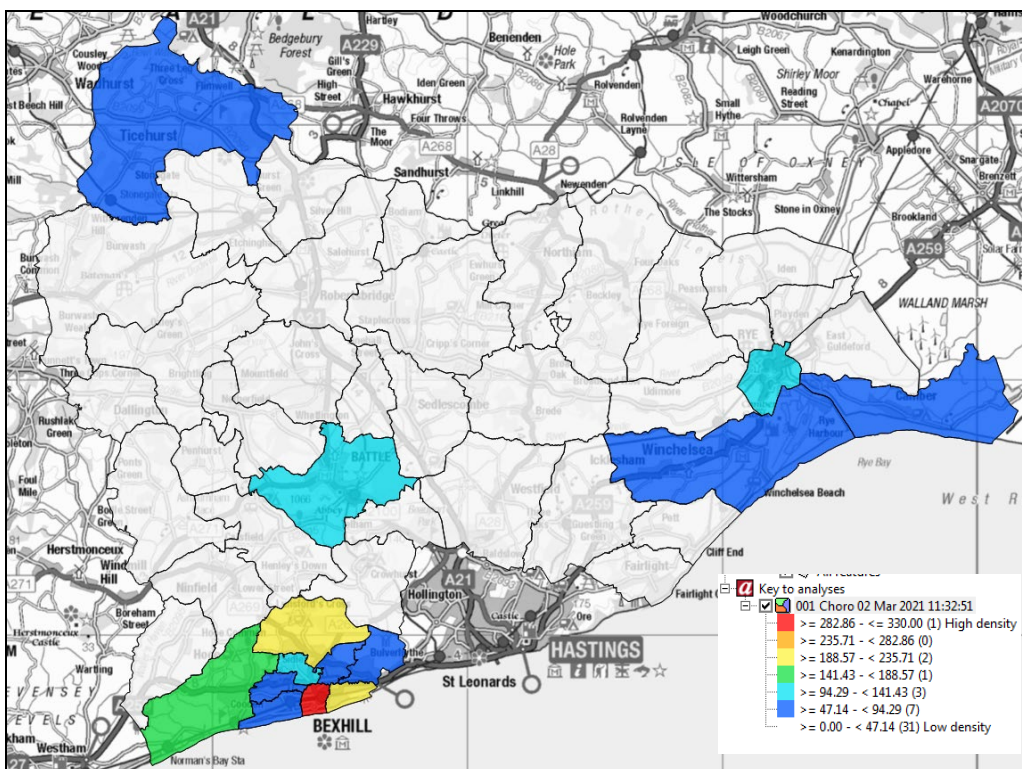
Below is the mapping of all crime across the district for the year 2020.



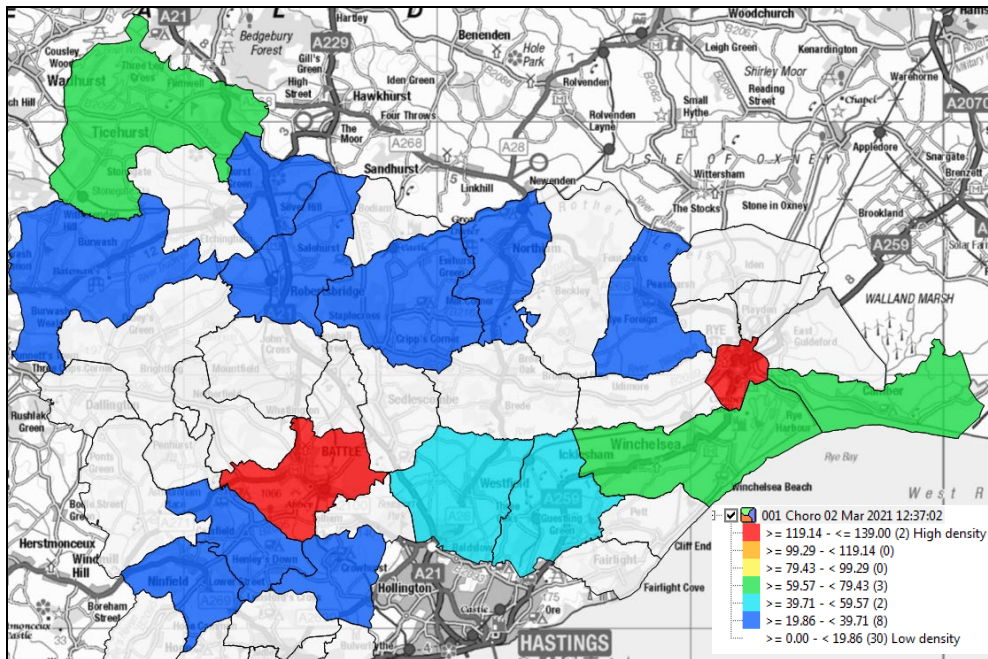
The key beat area recording the most offences was Central in Bexhill followed by Sackville and Sidley. The map below is the same analysis with Bexhill removed indicating that other key areas are Battle, Rye and Ticehurst.



Below is the mapping of anti-social behaviour incidents across the district for the year 2020 which are very similar to the crime mapping.



The key areas recording the most incidents were in Bexhill in Central, Sackville and Sidley beat areas. Removing Bexhill from the data indicated higher levels in Battle and Rye beats followed by Ticehurst, Icklesham and Camber.



As anti-social behaviour has increased significantly, below are some bullet points based on key word searches. Please note that some may be double counted such as Op Apollo and breach if both are mentioned within the summary of the incident.

Bexhill

- In Bexhill there were 1307 ASB incidents recorded. There were nine repeat callers accounting for 89 (6.8%) calls.
- A single neighbourhood dispute accounted for 41 incidents with more than one repeat caller responsible for some of the calls.
- Key areas were Egerton Park, Galley Hill, Western Road and De La Warr Parade/Pavilion.
- There were 107 (8.2%) linked to Op Apollo the covid 19 pandemic police operation.
- There were 141 (10.8%) linked to 'breach' referring to the covid 19 pandemic.
- Neighbour complaints accounted for 20.8% (272) of incidents.
- Calls regarding youths accounted for 10.6% (138) of incidents.
- Parties/raves accounted for 5.7% (74) of incidents.

Battle

- In Battle there were 473 ASB incidents recorded. Although there were some repeat callers, none exceeded seven.
- Key areas included Blacksmiths Field, Brede High Wood and Bexhill Road.
- There were 58 (12.3%) linked to Op Apollo the covid 19 pandemic police operation.
- There were 36 (7.6%) linked to 'breach' referring to the covid 19 pandemic.
- Neighbour complaints accounted for 24.1% (114) of incidents.
- Calls regarding youths accounted for just 7.% (35) of incidents.
- Parties/raves accounted for 6.1% (29) of incidents.

Rye

- In Rye there were 507 ASB incidents recorded with camber accounting for 15% (75).
- Although there were some repeat callers, non exceeded seven.
- Key locations were Camber Beach, Lydd Road, Winchelsea Beach Goulds Drive and Military Road.
- There were 78 (15.8%) linked to Op Apollo the covid 19 pandemic police operation.
- There were 61 (12.0%) linked to 'breach' referring to the covid 19 pandemic.
- Neighbour complaints accounted for 20.5% (104) of incidents.
- Calls regarding youths accounted for just 5.1% (26) of incidents.
- Parties/raves accounted for 11.8% (60) of incidents.